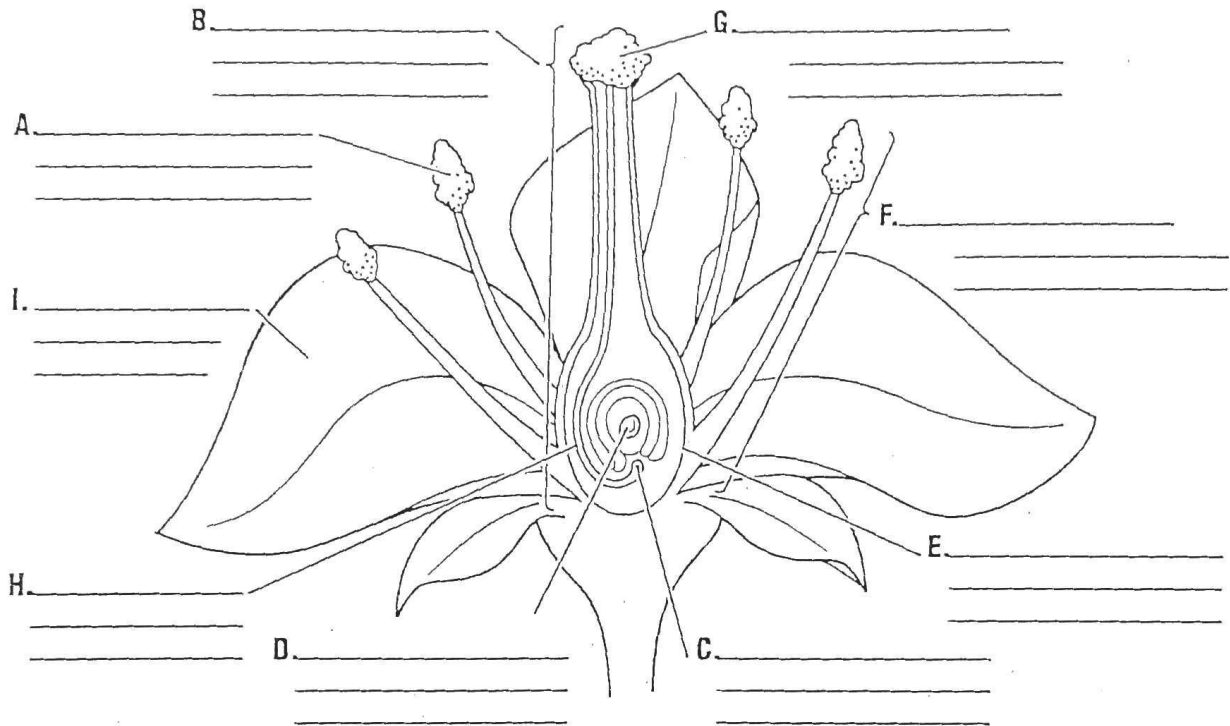


Goal • Understand flower structure and the processes of pollination and fertilization.

What to Do

1. Label each numbered flower part. Then write a note in the space provided indicating the function of each.



2. _____ occurs when pollen has been transferred from the anther to the stigma. When the pollen grain germinates on the stigma it creates a burrow called the _____ as it travels toward the ovary.
3. When the sperm cell from the pollen grain reaches the _____, the _____ joins with the egg. This is called fertilization.
4. _____ must take place before _____ can take place.
5. The fertilized embryo will become a tiny new plant inside the seed. We call this tiny new plant the _____.